

Gas delivery during the transport

Easy to Use

- Designed for permanent transport application for Oxygen, Nitrogen, Argon, Carbon Dioxide and Nitrogen Oxide e. g. Life Fish Transport - LFT
- The cylinder was primarily developed for Life Fish Transport to deliver O₂
- Automatic pressure building and gas economizer systems
- All valves and instruments within easy reach and visibility
- Stable low center of gravity

Superior Performance

- Rugged, maneuverable and fast filling
- Gas and/or liquid withdrawal
- Continuous flow rates up to 9,2 Nm³/hr
- Long life and vibration resistance

Cost Effective

- Transport one cylinder instead of five pressure bottles
- Super-insulation provides long holding time and low Nominal Evaporation Rate
- Stainless steel vessels and patented robust inner support system
- Heavy-duty footring and large diameter handling ring with four supports



Transportable liquid cylinder



Always fresh fish on your plate.



Micrometer Controlled Regulator (MCR)

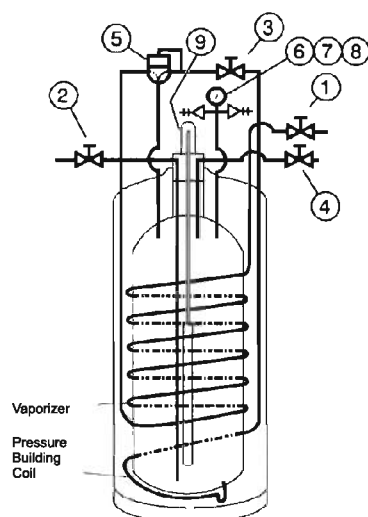


Type		180 / 24 MCR LFT
Capacity		
Liquid (gross)	(liters)	196
Liquid (net)	(liters)	186
Gas (N ₂)*	(Nm ³)	119
Gas (O ₂)*	(Nm ³)	148
Gas (Ar)*	(Nm ³)	146
Gas (CO ₂)*	(Nm ³)	104
Gas (N ₂ O)*	(Nm ³)	96
Performance		
NER** (N ₂)	(% per day)	2,9
NER (O ₂ - AR)	(% per day)	1,8
NER (CO ₂ - N ₂ O)	(% per day)	0,5
Gas Flow (N ₂ , O ₂)	(Nm ³ /hr)	9,2
Gas Flow (CO ₂ or N ₂ O)	(Nm ³ /hr)	2,9
Relief Valve Setting	(bar)	24
Code	TPED (EN1251, ADR)	
Dimensions		
Tank Diameter	(mm)	508
Base Type	footring	
Base Size	(mm)	508
Height	(mm)	1622
Empty Weight	(kg)	135
Maximum Full Weight***	N ₂ (kg)	285
	O ₂ (kg)	347
	Ar (kg)	394
	CO ₂ (kg)	342
	N ₂ O (kg)	386

* At 10 bar pressure

** NER: Nominal Evaporation Rate

*** Tank plus product at saturated pressure 0₂ bar for O₂, N₂, Ar and triple point for CO₂ and N₂O



Item Plumbing Controls and Function

- Gas Use Valve** – Used for gas withdrawal.
- Fill / Liquid Valve** – Used for filling or liquid withdrawal.
- Pressure Control Valve** – Used to turn on / off the pressure control regulator function.
- Vent Valve** – Used to vent pressure.
- Micrometer Control Regulator** – Used to automatically control operating pressure.
- Pressure Gauge** – Indicates internal cylinder pressure.
- 7. & 8. Dual Pressure Relief Valves** – Used to limit pressure in the liquid cylinder.
- Liquid Level Gauge** – Used to approximate the liquid contents of the liquid cylinder.