

PERMACYL ZX

High Pressure
High Flow

Chart's Microbulk Solution for Stationary Applications

Easy to Use

- Compact unit including product vaporizer
- Automatically optimizes operating pressure and gas use
- All valves and instruments within easy reach and visibility
- Pallet base for easy manipulation
- Quick and easy installation

Superior Performance

- Pressures up to 37 bar
- Continuous gas flow rate up to **130 m³/h at 30 bar**
- High performance pressure building system
- Large integrated vaporizer creates high flow of gas

Cost Effective

- Long holding time and low normal evaporation rates using super-insulation technology
- All stainless steel construction and patented inner support system for durability and long life
- Uses up to 65% less space than comparable high pressure cylinder bundles or pallets

The optimum gas supply system for laser and other high pressure applications



5-year
vacuum
warranty



Innovation. Experience. Performance.

Chart Ferox, a.s., a Chart Industries Company

Chart Ferox, a.s. • Ústecká 30 • CZ-405 30 Děčín • Czech Republic • ph/ +420-412-507 343 • fx/ +420-412-507 297

Chart Ferox GmbH • Broshhauser Straße 20 • D-42697 Solingen • Germany • ph/ +49-(0)212-2 33 67-0 • fx/ +49-(0)212-2 33 67-10

Email: ferox-sales@chart-ld.com • Internet: <http://www.chart-ferox.com>

04010070E-0712 © 2009, Chart Ferox, a.s., a Chart Industries Company, All Rights Reserved

PERMACYL ZX

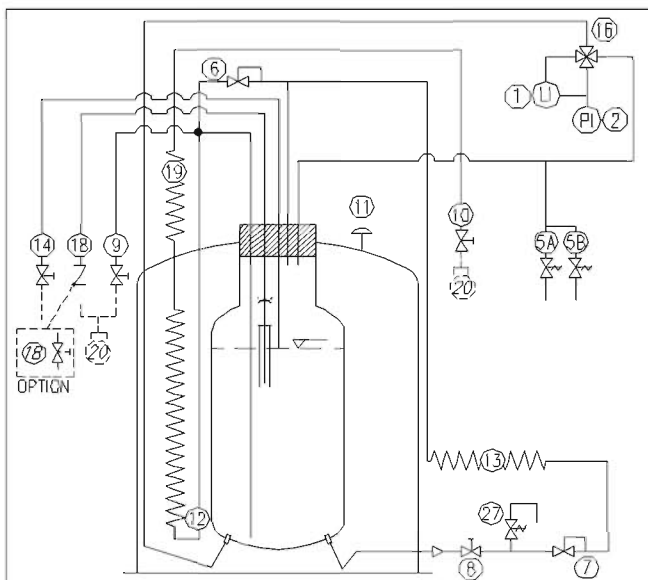
Specifications

Model		1000/37 ZX	1500/37 ZX	2000/37 ZX
Capacity				
Liquid (gross)	(liters)	989	1504	2007
Liquid (net)	(liters)	940	1428	1906
Gas (N ₂)* Nitrogen	(Nm ³)	608	923	1232
Gas (O ₂)* Oxygen	(Nm ³)	751	1142	1524
Gas (Ar)* Argon	(Nm ³)	741	1126	1503
Performance				
NER** (N ₂)	(% per day)	0,9	0,8	0,8
Gas Flow (N ₂ , O ₂ , Ar)	(Nm ³ /hr)	100	120	130
Gas Flow (CO ₂ or N ₂ O)	(Nm ³ /hr)	30	40	42
Relief Valve Setting	(bar)	37	37	37
Code		PED	PED	PED
Dimensions				
Tank Diameter	(mm)	1067	1300	1300
Base Dimensions (LxW)	(mm)	1240 x 1440	1470 x 1670	1470 x 1670
Type of Base		Pallet Base	Pallet Base	Pallet Base
Height	(mm)	2250	2250	2590
Tare Weight (approx.)	(kg)	1070	1400	1630

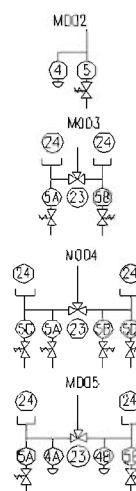
* At 0 bar pressure saturated

** NER: Nominal Evaporation Rate

Note: all models and specifications are conditional and subject to change without prior notice.



SAFETY LINE OPTIONS:



No. Nomenclature

1. Liquid Level Gauge
2. Pressure Gauge
4. Burst Disc (optional)
5. Safety Relief Valve
6. Economizer
7. Regulator
8. Regulator Isolation Valve
9. Bottom Fill / Liquid Withdrawal
10. Gas Withdrawal
11. Vacuum Port / Safety Disc
12. Product Vaporizer
13. Pressure Building Coil
14. Vent / Trycock Valve
16. Gauge Isolation Valve (optional)
18. Top Fill
19. Additional Product Vaporizer
20. Connection (optional)
23. Divertor (optional)
27. Thermal relieve valve



Innovation. Experience. Performance.

Chart Ferox, a.s., a Chart Industries Company

Chart Ferox, a.s. • Ústecká 30 • CZ-405 30 Děčín • Czech Republic • ph/ +420-412-507 343 • fx/ +420-412-507 297
 Chart Ferox GmbH • Broshhauser Straße 20 • D-42697 Solingen • Germany • ph/ +49-(0)212-2 33 67-0 • fx/ +49-(0)212-2 33 67-10
 Email: ferox-sales@chart-ld.com • Internet: <http://www.chart-ferox.com>
 04010070E-0712 © 2009, Chart Ferox, a.s., a Chart Industries Company, All Rights Reserved