

DELIVERY UNITS

**Cryogenic
Demountable or Fixed Tanks**



- ▶ Designed for transportation of liquid nitrogen, oxygen and argon.
- ▶ The volume capacity from 1 000 litres to 14 000 litres.
- ▶ Choice of high-grade materials for all parts of the DELIVERY UNITS
- ▶ Optimized design to be made with respect to safety, reliability and corrosion protection.
- ▶ Pump transfer for low pressure tanks or pressure transfer for high pressure tanks
- ▶ Balanced ratio of capacity and the weight of the tank
- ▶ High performance of the equipment.
- ▶ Protected auxiliary vaporizer.
- ▶ Design and production in accordance with the European codes, standards and regulations for transportation of hazardous goods.
- ▶ Constructed for durability, long life, performance and low maintenance costs
- ▶ A two-shell vessel with a superinsulation
- ▶ Stainless steel inner vessel and interconnecting piping
- ▶ Carbon steel outer jacket with high performance paint
- ▶ The highest working pressure of the inner vessel secured with two independent relief valves.
- ▶ Supporting bottom frame for installation to the truck chassis.
- ▶ The truck is not part of the scope.
- ▶ Full ergonomic design of the rear cabinet and piping.



Innovation. Experience. Performance.™

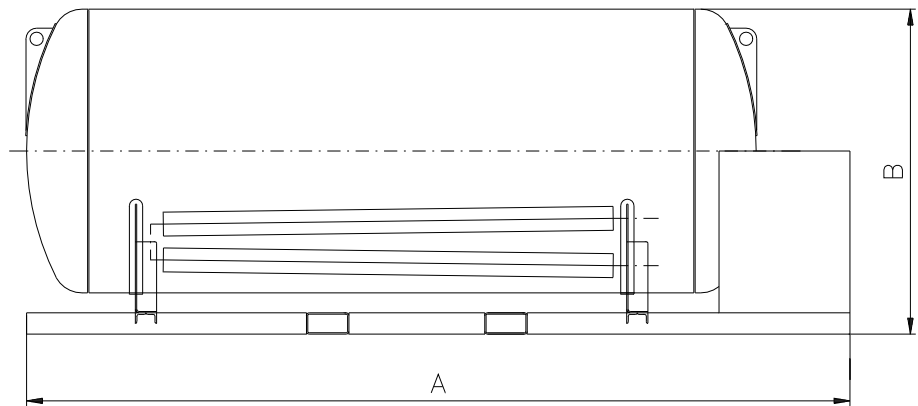
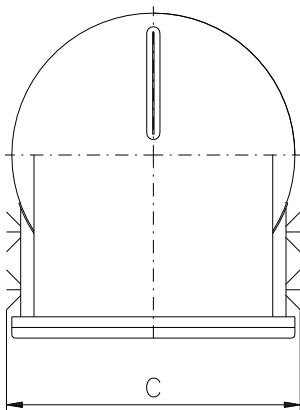
DELIVERY UNITS

Technical Specification



- ▶ Pressure gauges, differential manometer, connection points for pipe taking gas/liquid samples of the filling, relief valves as well as of individual lines are laid out in a clear manner, and are readily accessible.
- ▶ Section of optional features and accessories
- ▶ Flowmeter Protective carriers for flexible hose

Type	Gross	MAWP	A-Unit	B-Unit	C-Unit	Tare weight	Payload (kg)		
	Volume (l)						(bar)	length (mm)	height (mm)
<i>Pressure transfer:</i>									
DU 1/24	990	24	2472	1453	1100	1095	780	1100	1350
DU 2,2/24	2200	24	3300	1575	1300	1880	1740	2460	3030
DU 3,5/24	3511	24	4585	1510	2087	2820	2780	3930	4830
DU 6/18	6200	18	3900	2285	2380	4125	4860	6870	8450
DU 8/18	8500	18	4800	2285	2380	5210	6660	9420	11590
DU 10/18	10730	18	6460	2285	2380	6265	8390	11850	14580
DU 12/18	11955	18	5700	2525	2500	6910	8950	11100	11100
DU 14/18	13600	18	6225	2525	2500	7490	10180	10500	10500
DU 6/24	6230	24	5150	2330	2300	4800	4930	6970	8580
<i>Pump transfer:</i>									
DU 7/4	7100	4	4000	2150	2000	2900	5560	7860	9670
DU 9/3	8950	3	4100	2500	2250	3200	7010	9900	12180
DU 12/3	12200	3	5100	2500	2250	3700	9540	13490	16590



FEROX, a Chart Industries Company

Ferox a.s. Ústecká 30 CZ-405 30 Děčín Czech Republic ph/ +420-412-507 349 fx/ +420-412-507 297
 Ferox GmbH Brosshauser Straße 20 D-42697 Solingen Germany ph/ +49-(0)212-2 33 67-0 fx/ +49-(0)212-2 33 67-10
 Email: sales@chart-ferox.com Internet: http://www.chart-ferox.com

Innovation. Experience. Performance.™

02040056E-0904 © 2004, Ferox a.s., a Chart Industries Company, All Rights Reserved