

AUTO-FILL

**Accurate and easy Filling
of Liquid Cylinders
- anywhere and fast**

Features

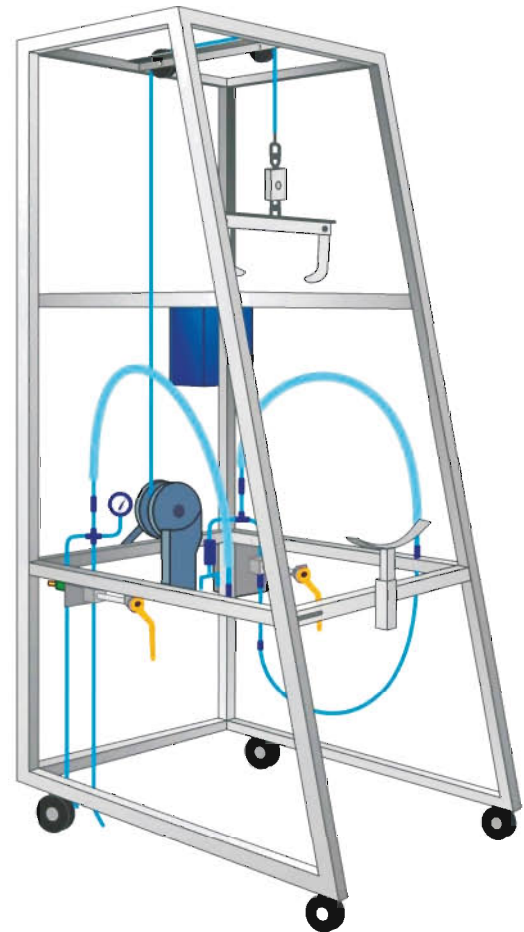
- **High-accuracy weigh-scale**
- **Filling controlled by electronic processor**
- **Fully automated**
- **Mobile utilization**
- **Stainless steel frame**
- **Control of cylinder-residues**
- **Optional data-transfer**

Chart's EasyFill solution enables you to fill liquid cylinders with highest accuracy, independent of medium or location.

The fill quantities of all available Chart liquid cylinders are stored in the electronic processor, and can be selected using a user-friendly menu.

Several parameters are continually controlled during the filling. Leaks and fill interruptions will be detected and reported.

Using the optional data storage, every filling may be protocolled and statistically processed.

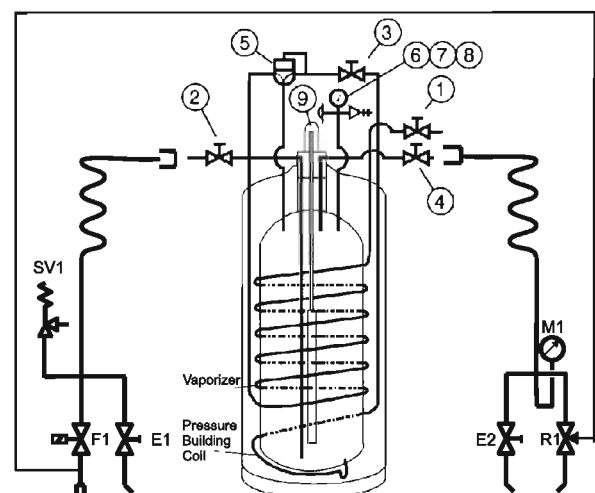


Nomenclature

Item Plumbing Controls and Function

1. Gas Use Valve
2. Fill / Liquid Valve
3. Pressure Control Valve
4. Vent Valve
5. Combination Pressure Control Regulator
6. Pressure Gauge
7. & 8. Dual Pressure Relief Valves
9. Liquid Level Indicator
- E1 REGO Valve for Liquid
- E2 REGO Valve for Gas
- R1 Differential Pressure Relief Valve
- SV1 REGO Safety Valve
- F1 2/2 Way coax Valve

Flow Schematic



Innovation. Experience. Performance.

Chart Ferox, a.s., a Chart Industries Company

Chart Ferox, a.s. • Ústecká 30 • CZ-405 30 Děčín • Czech Republic • ph/ +420-412-507 343 • fx/ +420-412-507 297
Chart Ferox GmbH • Helligenstock 34 c-f • D-42697 Solingen • Germany • ph/ +49-(0)212-2 33 67-0 • fx/ +49-(0)212-2 33 67-10
Email: ferox-sales@chart-ld.com • Internet: <http://www.chart-ferox.com>
02020551E © 2010, Chart Ferox, a.s., Chart Industries Company, All Rights Reserved

AUTO-FILL

**Easy, fast and accurate
Further Applications**

Preparation and Transport

Open the front protection handle and move the EasyFill until the cylinder to be filled is located inside the EasyFill's frame.

Hang the cylinder to the weigh device and pull it up. The load cell will be relieved.

Close the front protection handle, activate the turn- and move-locks.



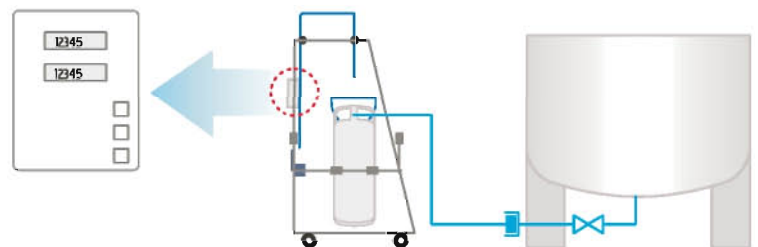
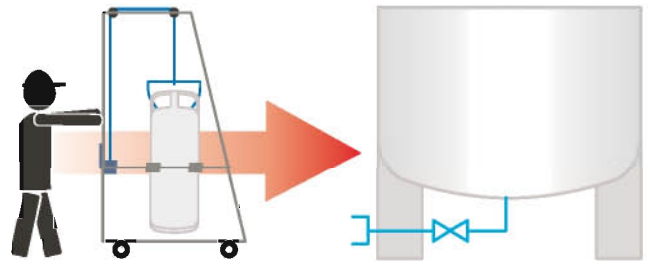
Connection and Filling

After the fill line is connected, all lines will be cleaned with the product for a pre-adjusted time span.

Afterwards the processor will suggest the quantity to be filled (dependent of the residue), which will then be confirmed or over-written by the user.

The fill procedure will now start automatically. It will end when the maximum fill level is reached.

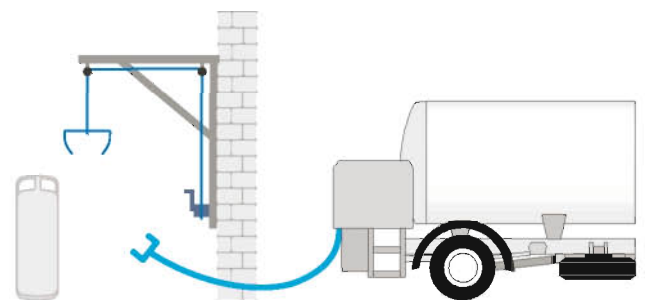
As all available products are stored in the processor's memory, the EasyFill is designed for flexible and product-independent application.



Filling at customer's site

A simple wall fixture allows filling at the customer's site. Any product and any cylinder type will be filled fast, accurate and reliable.

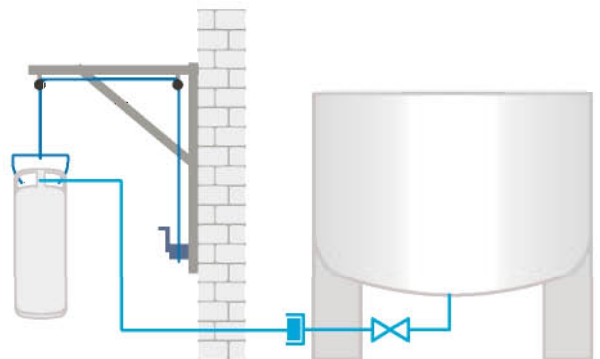
Offer your customers the best service possible with today's standards.



Hospitals and Universities

Filling at the storage tank and back to the use point - get independent!

- **SAFE accurate fill everytime**
- **Easy operation for filling of the Liquid Cylinder**
- **Refills when you want and need them**
- **Never exchanging your cylinder with someone else**
- **Eliminate purity concerns from using different types of Liquid Cylinders**



Innovation. Experience. Performance.

Chart Ferox, a.s., a Chart Industries Company

Chart Ferox, a.s. • Ústecká 30 • CZ-405 30 Děčín • Czech Republic • ph/ +420-412-507 343 • fx/ +420-412-507 297
Chart Ferox GmbH • Heiligenstock 34 c-f • D-42697 Solingen • Germany • ph/ +49-(0)212-2 33 67-0 • fx/ +49-(0)212-2 33 67-10
Email: ferox-sales@chart-ld.com • Internet: <http://www.chart-ferox.com>
02020551E © 2010, Chart Ferox, a.s., Chart Industries Company, All Rights Reserved