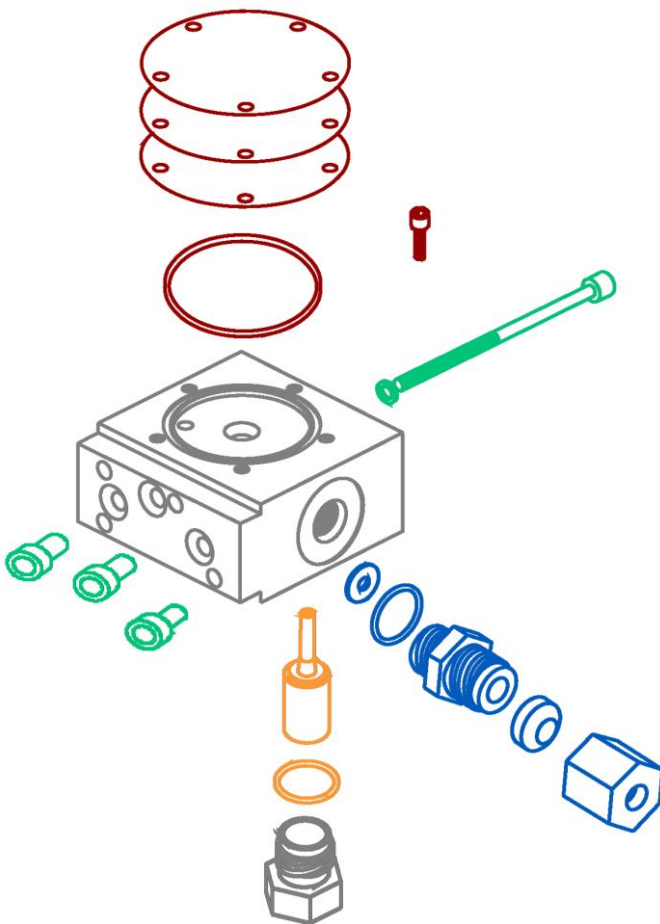


LCCM Regulator Rebuild Kits

Chart offers five kits to maintain your LCCM (Liquid Cylinder Control Manifold) - the historically - offered complete LCCM rebuild kit and now four specific-portion kits.

The four smaller kits allow you to service specific portions of the LCCM without the expense of doing a complete rebuild, while the complete kit offers all the parts you need to rebuild your LCCM. Each kit comes with instructions and is easy to install.

See the diagrams to select the kit you need and place your order today.



Specific Portion Kits Available:

- ▶ Pressure Builder Assembly Kit - P/N 11016121
- ▶ Spring Cup Assembly Kit - P/N 11016139
- ▶ Diaphragm Kit - P/N 11016147
- ▶ LCCM Seal Replacement Kit - P/N 10951539

*See these kit diagrams and contents on back.

Complete LCCM Rebuild Kit

P/N 10770341

Item	Qty	Description
1	1	Sealing Washer
2	1	Small O-Ring
3	2	Manifold Adaptor
4	1	PB Seal
5	1	Packing Nut
6	1	Halocarbon Grease (not shown)
7	1	Regulator Pin
8	1	Flat Washer
9	1	Spring Cup
10	1	Screw, 2-56 x .2 BHC
11	2	Large O-Ring
12	3	Screw, 10-32 x .62 SHC
13	1	Alignment Pin
14	1	Tan Diaphragm
15	1	White Diaphragm
16	1	Quad Ring
17	1	Capsule Loctite 242 (not shown)
18	5	Large Ferrule
19	4	Small Ferrule
20	1	#10 Lock Washer
21	1	Screw, 10-32 x 2.5 SHC

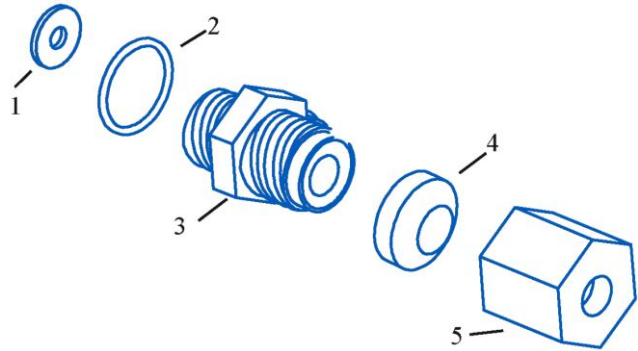


Innovation. Experience. Performance.™

LCCM Regulator Rebuild Kits

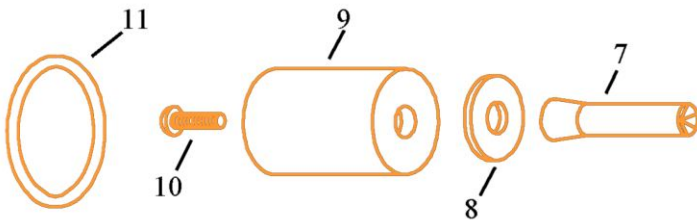
PB Assembly Kit, P/N 11016121

Item	Qty	Description
1	1	Sealing Washer
2	1	Small O-Ring
3	2	Manifold Adaptor
4	1	PB Seal
5	1	Packing Nut
6	1	Halocarbon Grease (not shown)



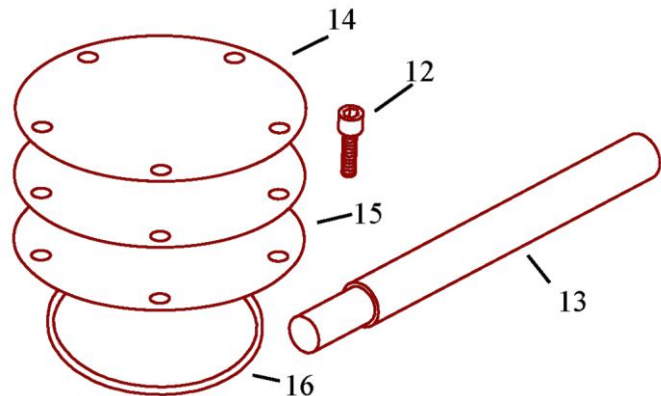
Spring Cup Assembly Kit, P/N 11016139

Item	Qty	Description
7	1	Regulator Pin
8	1	Flat Washer
9	1	Spring Cup
10	1	Screw, 2-56 x .2 BHC
11	1	Large O-Ring
6	1	Halocarbon Grease (not shown)

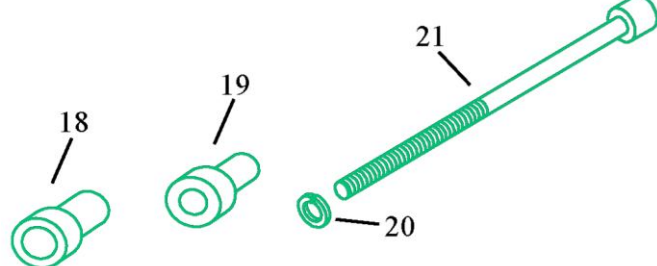


Diaphragm Kit, P/N 11016147

Item	Qty	Description
12	5	Screw, 10-32 x .62 SHC
13	3	Alignment Pin
14	2	Tan Diaphragm
15	1	White Diaphragm
16	1	Quad Ring
17	1	Capsule Loctite 242 (not shown)



LCCM Seal Replacement Kit, P/N 10951539



Item	Qty	Description
18	2	Large Ferrule
19	1	Small Ferrule
20	4	#10 Lock Washer
21	4	Screw, 10-32 x 2.5 SHC
6	1	Halocarbon Grease (not shown)
17	1	Capsule Loctite 242 (not shown)



Innovation. Experience. Performance.™

FEROX, a Chart Industries Company

Ferox a.s. Ústecká 30 CZ-405 30 Děčín Czech Republic ph/ +420-412-507 349 fx/ +420-412-507 297
 Ferox GmbH Brosshauser Straße 20 D-42697 Solingen Germany ph/ +49-(0)212-2 33 67-0 fx/ +49-(0)212-2 33 67-10
 Email: sales@chart-ferox.com Internet: http://www.chart-ferox.com

0012045E-0904 © 2004, Ferox a.s., a Chart Industries Company, All Rights Reserved